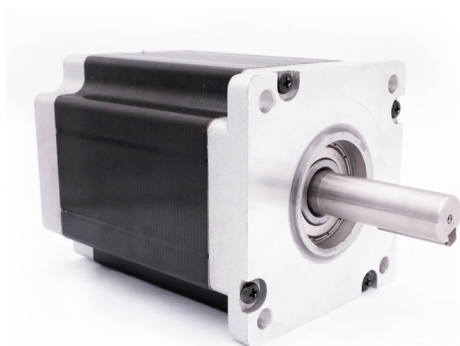


110BYGH350

HYBRID STEPPING MOTOR



General Specifications

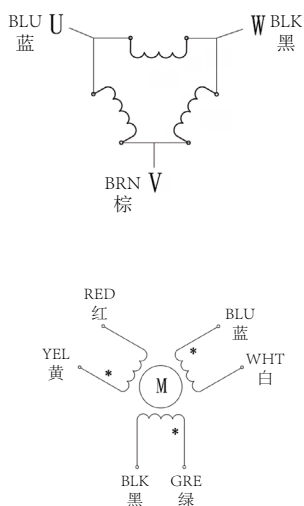
Step Accuracy	± 5%
Temperature Rise	80 °C Max
Insulation Resistance	100MΩ Min.500VC DC
Ambient Temperature	-20°C~+50°C
Dielectric Strength	500VAC 1 minute
Max Radial Force	330N (20mm from front flange)
Max Axial Force	100N

Technical Specifications

Model	Step Angle (°/Step)	Lead Wire (NO.)	Voltage (V)	Current (A/Phase)	Resistance (Ω/Phase)	Inductance (mH/Phase)	Holding Torque (N.m)	Motor Height L (mm)	Motor Weight (Kg)
110BYGH350A-001	1.2	3	6.0	4.3	1.4	9.2	10	120	6.5
110BYGH350B-001			10.2	6.0	1.7	12.0	15	148	7.4
110BYGH350C-001			13.4	6.4	2.1	14.8	19	182	9.8
110BYGH350D-001			20.0	6.9	2.9	22.0	20	216	11.7

* Products can be customized by special request.

Wiring Diagram



Mechanical Dimension

